

# Oxford City Planning Committee Presentation

Reference Number: 24/01434/FUL

Site Address: Stansfeld Park

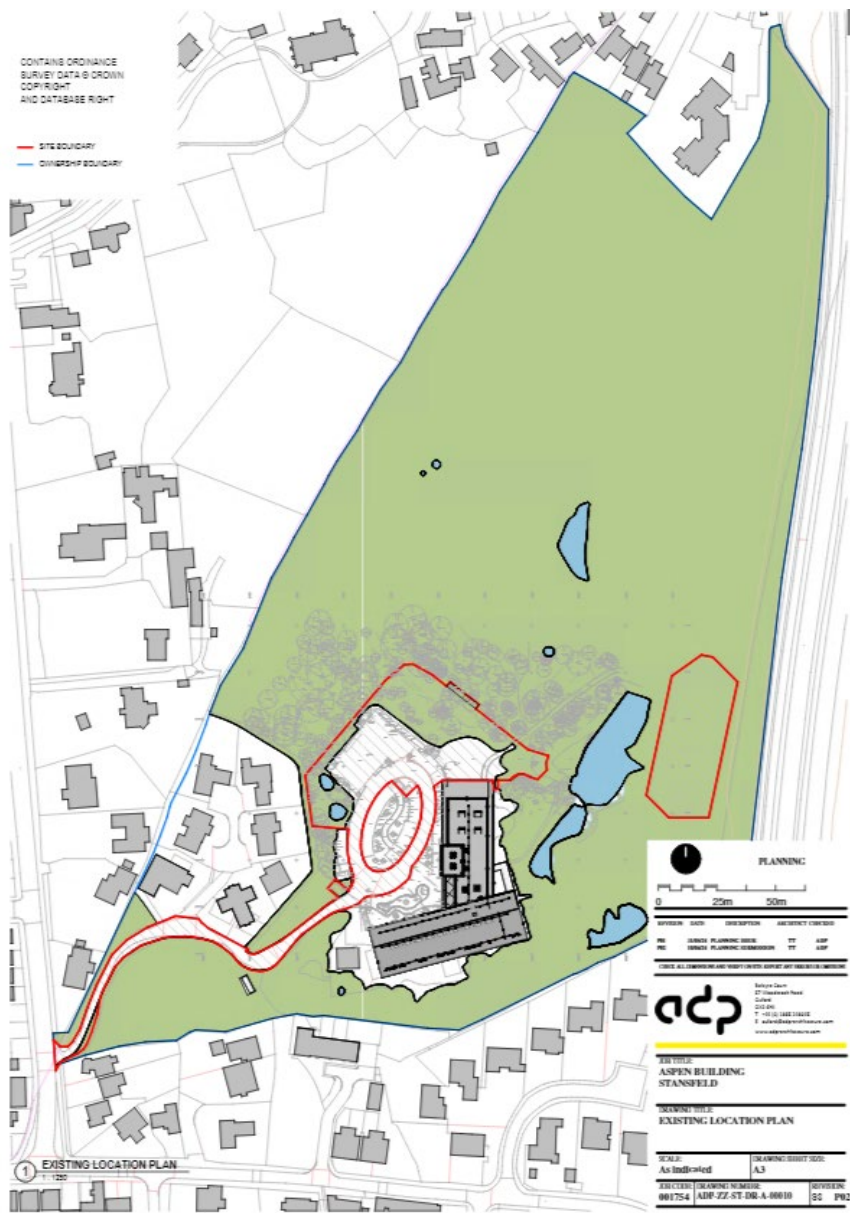
[www.oxford.gov.uk](http://www.oxford.gov.uk)



Agenda Item 4

# Site Location Plan

20



www.oxford.gov.uk



**OXFORD  
CITY  
COUNCIL**



# Existing Site



[www.oxford.gov.uk](http://www.oxford.gov.uk)



# Proposed Building Location

22



[www.oxford.gov.uk](http://www.oxford.gov.uk)



# Proposed Car Park Location

[www.oxford.gov.uk](http://www.oxford.gov.uk)



# Proposed Area for Woodland Enhancement



[www.oxford.gov.uk](http://www.oxford.gov.uk)



OXFORD  
CITY  
COUNCIL



# Existing Site Plan

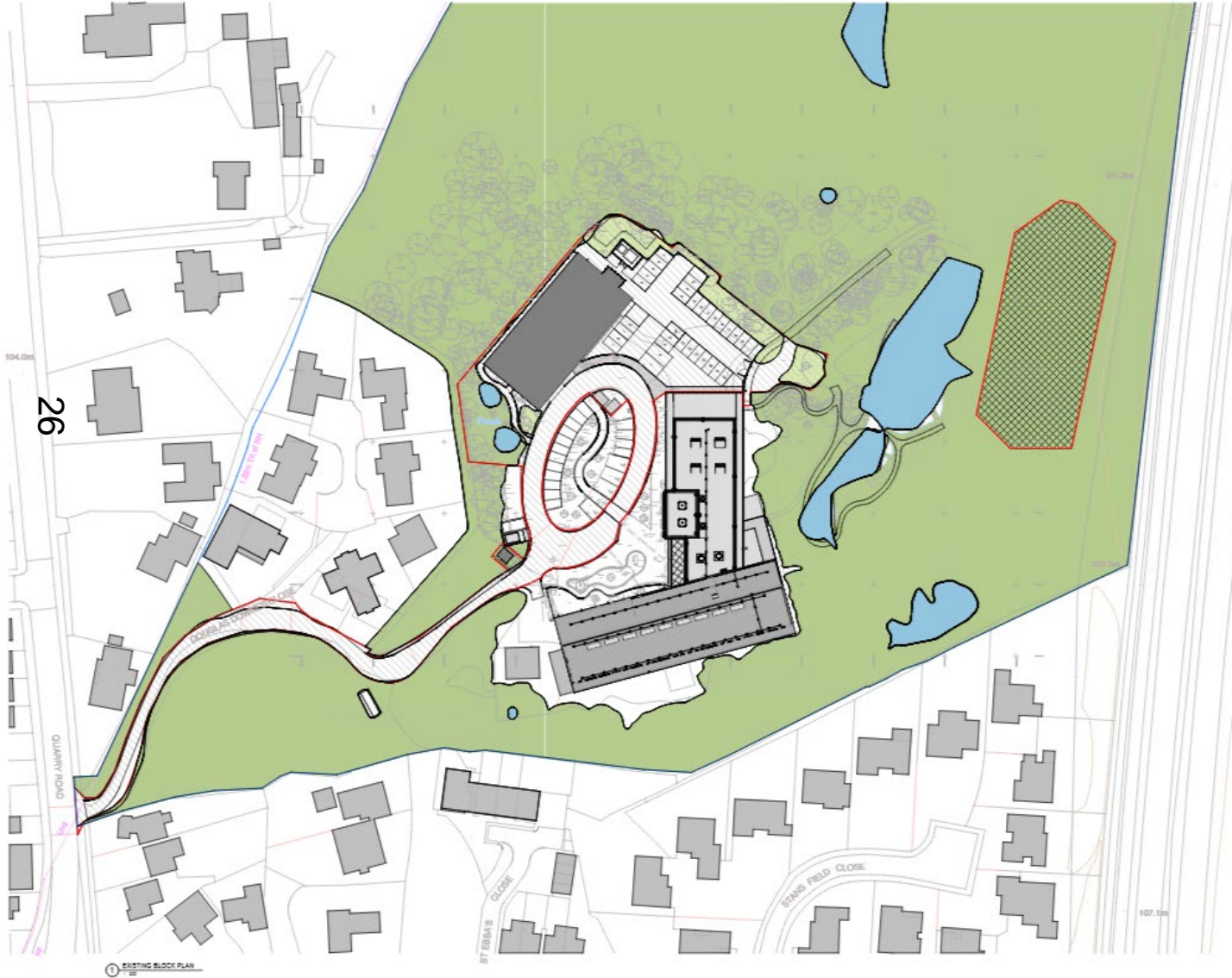


25 EXISTING SITE LOCATION PLAN

[www.oxford.gov.uk](http://www.oxford.gov.uk)



# Proposed Site Plan

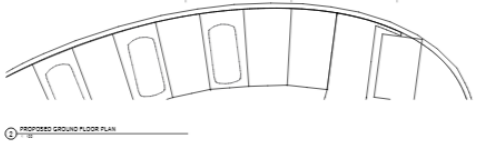
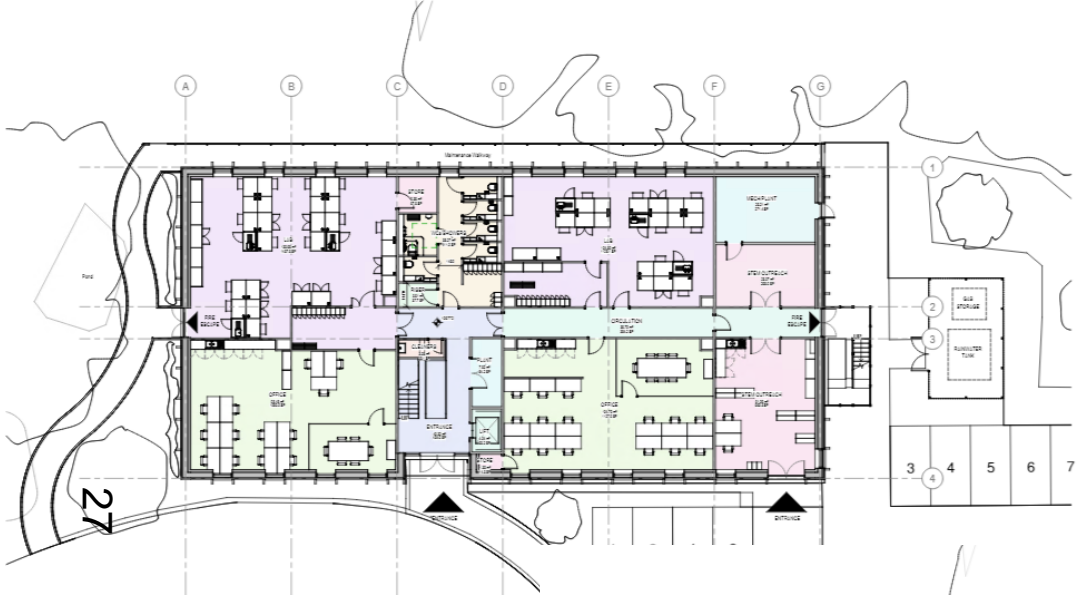


[www.oxford.gov.uk](http://www.oxford.gov.uk)

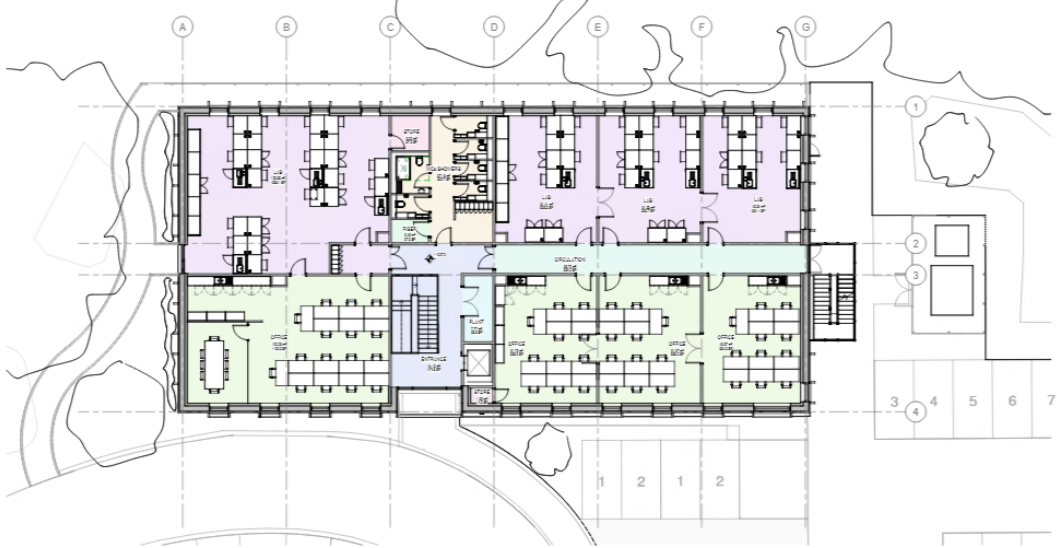




# Proposed Floor Plans



PROPOSED GROUND FLOOR PLAN



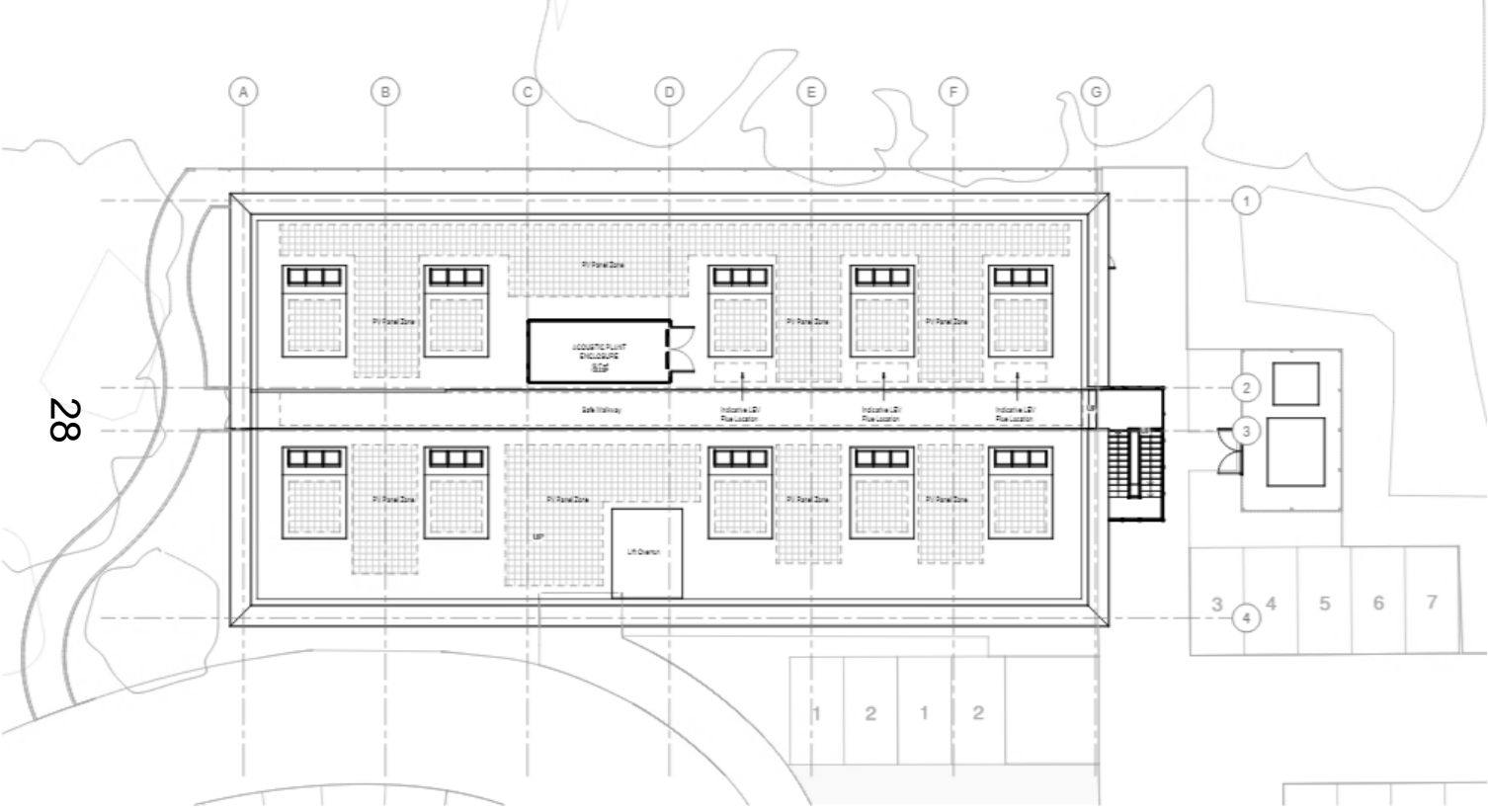
PROPOSED FIRST FLOOR PLAN

[www.oxford.gov.uk](http://www.oxford.gov.uk)

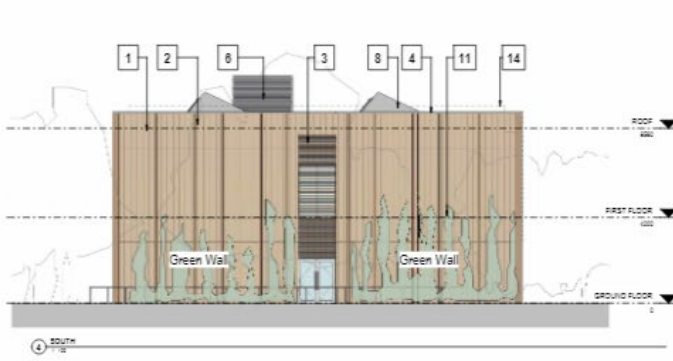


# Proposed Roof Plan

www.oxford.gov.uk



# Proposed Elevations



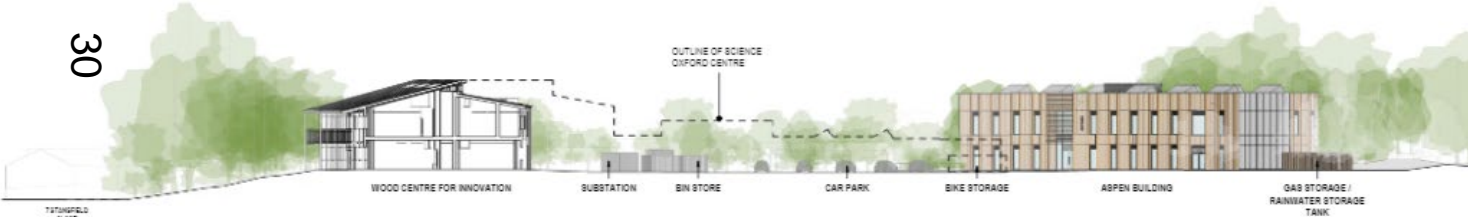
[www.oxford.gov.uk](http://www.oxford.gov.uk)



# Proposed Site Sections



1 SITE SECTION - LOOKING NORTH



2 SITE SECTION - LOOKING WEST



3 SITE SECTION - LOOKING SOUTH WEST

[www.oxford.gov.uk](http://www.oxford.gov.uk)



# Proposed Visual

[www.oxford.gov.uk](http://www.oxford.gov.uk)



31



This page is intentionally left blank